

Low Pressure and Vacuum Capsule Gauges

Construction

These heavy duty industrial gauges, are manufactured with either a mild steel or aluminium case and bezel, [black epoxy coated], or with a stainless steel case and bezel.

General construction is with a brass, bar type movement, fully adjustable, beryllium copper capsule with brass connection block. Alternatively, for the more aggressive environment, a stainless steel connection and capsule is available.



Operation

Atmospheric is used as the reference pressure. Changes in the measuring pressure causes the capsule to expand, this expansion is in proportion to the applied pressure, this is then transmitted to the instrument pointer by means of a fine precision movement. This is then indicated as a deflection on the gauge dial.

Application

For use in the measurement of low pressure and vacuum gases, which are compatible with the gauge materials.

Stainless steel case low range capsule gauge

Models **SSC / CAP** **ST / CAP**

According to DIN EN 837-3
Nominal sizes, 63, 100, 160 and 250 mm
Accuracy: Class 1,6

Features

- * Rugged stainless steel case construction
- * Bayonet locking case and bezel
- * Protection to IP54
- * Usable at full scale
- * Beryllium or stainless steel capsule
- * Over-range protection 130%

Ranges

0 - 25 mbar. up to 0...600mbar
0 - 10 IN.WG. up to 0...250 IN..WG.

Application

Petrochemical and chemical
Food and beverage
Gas industry
Machine and apparatus construction

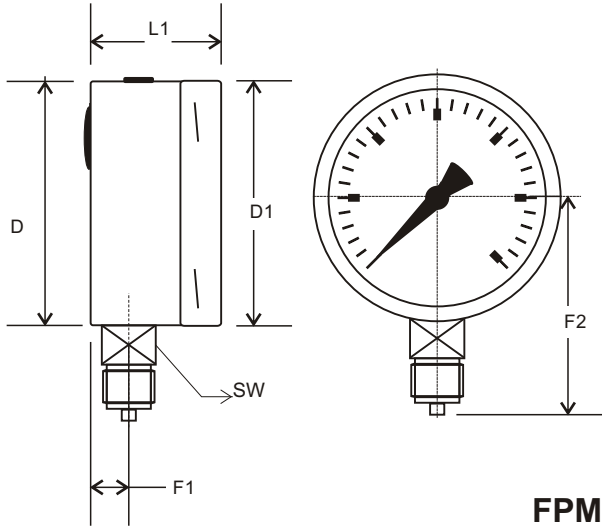


Technical Specification	SSC/CAP		ST/CAP	
Dial size	63	100	160	250
Construction	Flush fitting bayonet locking case and bezel,			
Measuring Element	Capsule.			
Range {mbar}	0 -25. 40 . 60. 100. 160. 250 . 400. 600.			
Over-range limit	130% full scale....short periods.			
Process connection	1/4bsp, 3/8bsp, 1/2bsp according to EN837 1/4npt, 1/2npt, according to ANSI/ASME B1.20.1			
Material Construction				
Process connection	Brass.....or.....Stainless steel AISI 316L			
Capsule	Beryllium copper.....or.....Stainless steel AISI 316L			
Case / Bezel ring	Stainless steel AISI 304L.			
Window	Instrument glass ...optional...laminated safety glass....acrylic glass.			
Dial	Aluminium, black figures on white...optional....other colours			
Pointer	Aluminium, black, balanced.			
Movement	Brass.....Optional.Stainless steel 304.			
Accuracy	Class 1.6 (1.6% F.S..D.)..... Optional class 1 (1%)			
Permissible				
Degree C				
Ambient Temperature	-15...+50			
Process Temperature	Min...-20...max...+65			
Storage Temperature	-20....+60			
Temperature Effect	max...0,3% / 10 Deg C			
Protection EN 60 529	IP54			
Filling Liquid	N/A			
Mountings	Direct bottom, direct back, surface, flush panel, panel fixing.			
Weight dry / {kg}	0.3	1.0	1.4	2.6
Accessories				
Snubber screw, special dial, red setting pointer, special connection.				

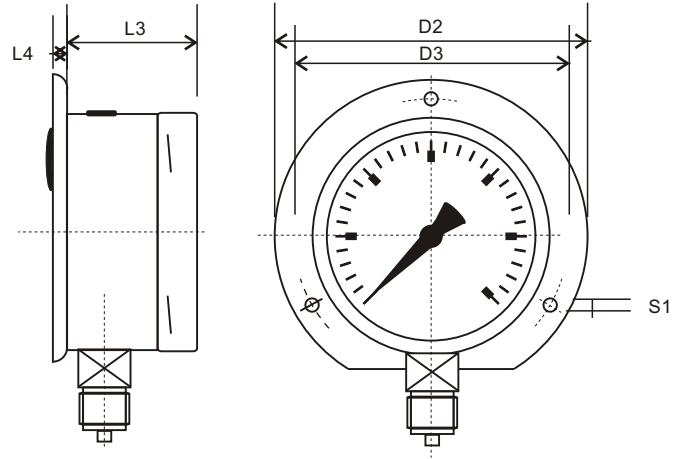
Data Sheet no.
NGT 603CAP

GAUGES WITH BOTTOM CONNECTION

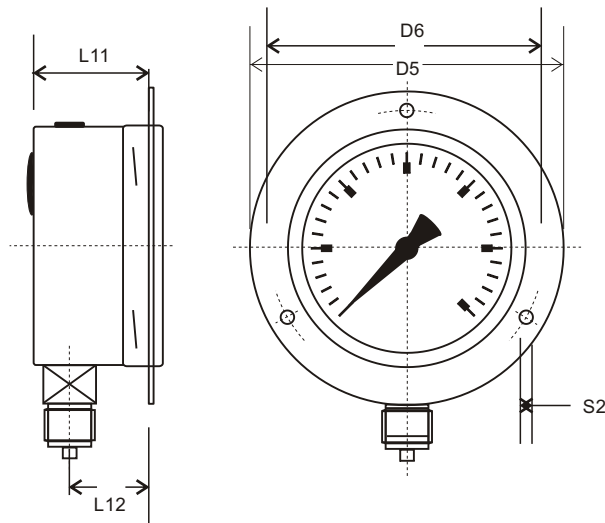
DM / V



SM / V



FPM / 3H / V



	D	D1	D2	D3	D4	D5	D6	L1	L2	L3	L4	L5	L6
63	62	64	86	75	67	86	75	40	36	38	3	39	37
100	99	101	132	118	107	132	118	52	52	50	5.5	56	49
160	159	161	192	178	167	192	178	52	52	50	5.5	56	49
250	250	253	289	276	265	289	276	55	55	50	3.0	58	51

	L7	L8	L9	L10	L11	L12	F1	F2	F3	F4	S1	S2	SW
63	13	4	30	5	35	25	10	57	28	----	3.6	3.6	14
100	16	4	47	6	47	30	15	90	40	32	5.5	5.5	22
160	16	4	47	6	47	30	15	119	40	32	6	6	22
250	16	7	49	6	49	31	16	164	40	32	6.5	6.5	22

GENERAL DIMENSIONS (MM)

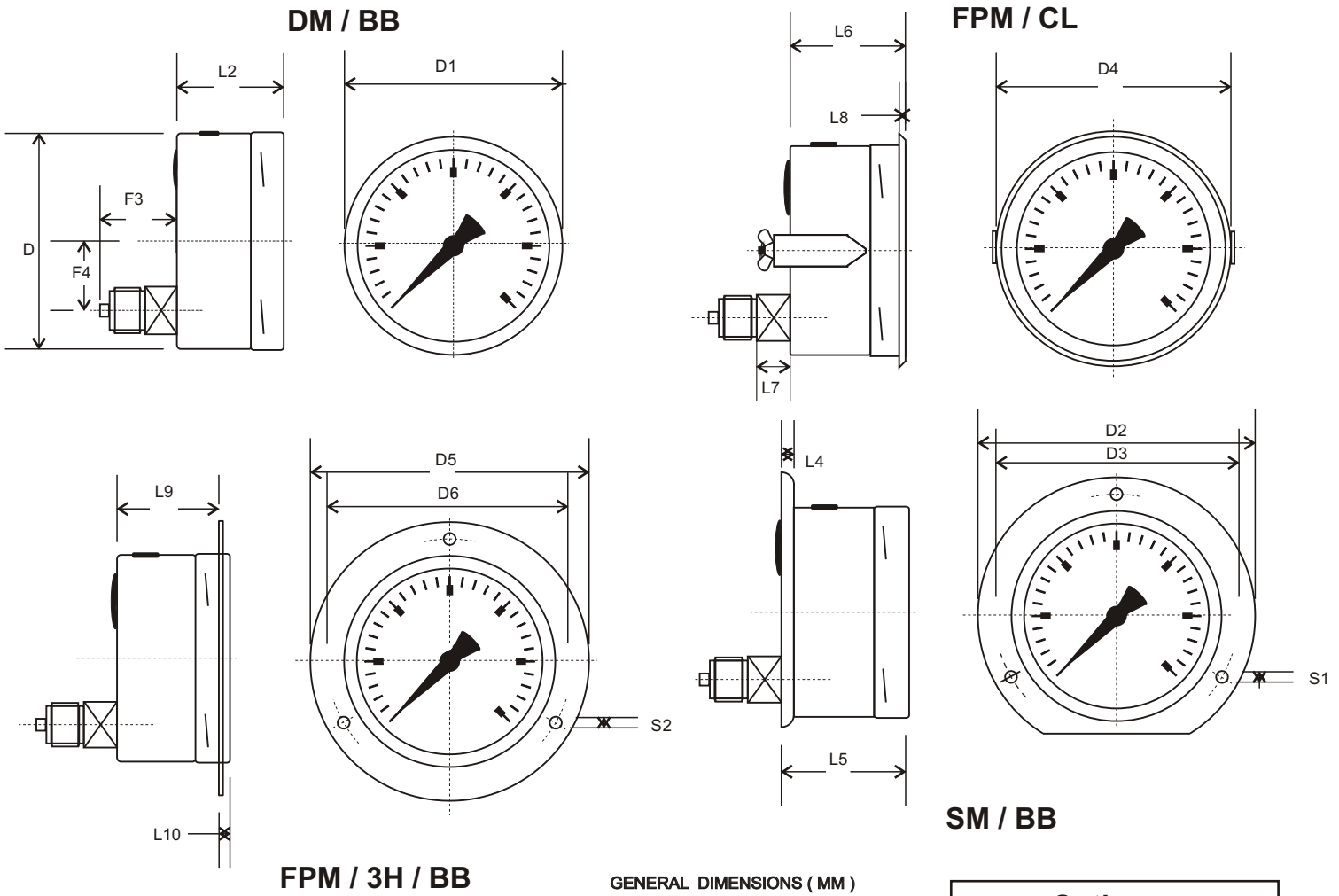
Model

SSC/CAP...BRASS INTERNALS
ST/CAP...ST.ST INTERNALS

All specifications are subject to change without notice
FOR PANEL CUT - OUT SIZE, ADD 1mm TO D1.

Data Sheet no.
NGT 603CAP

GAUGES WITH BACK CONNECTION



	D	D1	D2	D3	D4	D5	D6	L1	L2	L3	L4	L5	L6
63	62	64	86	75	67	86	75	40	36	38	3	39	37
100	99	101	132	118	107	132	118	52	52	50	5.5	56	49
160	159	161	192	178	167	192	178	52	52	50	5.5	56	49
250	250	253	289	276	265	289	276	55	55	50	3.0	58	51

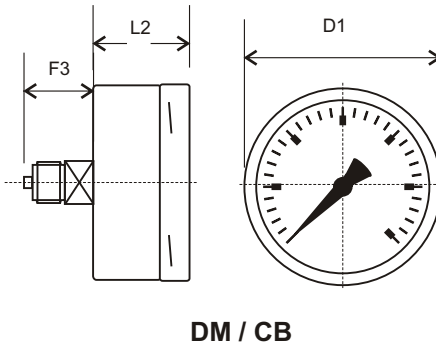
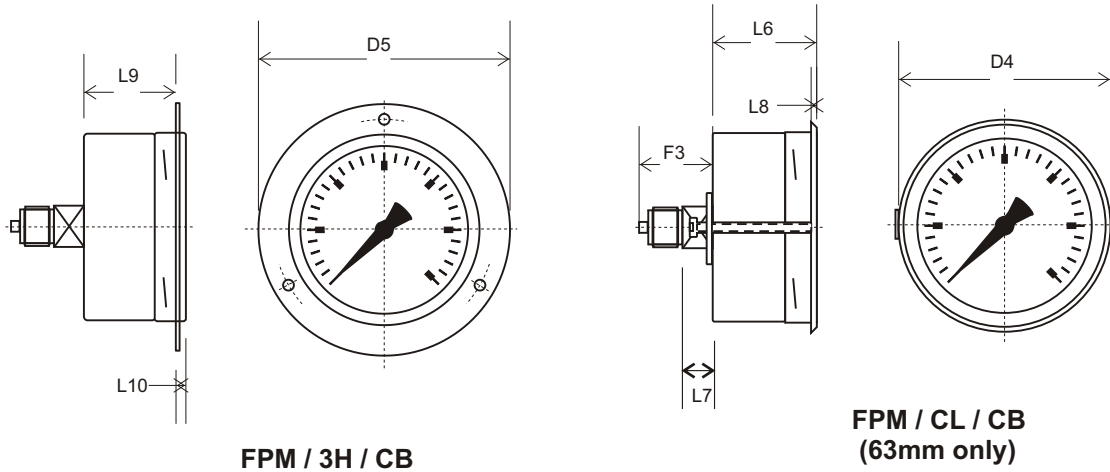
	L7	L8	L9	L10	L11	L12	F1	F2	F3	F4	S1	S2	SW
63	13	4	30	5	35	25	10	57	28	----	3.6	3.6	14
100	16	4	47	6	47	30	15	90	40	32	5.5	5.5	22
160	16	4	47	6	47	30	15	119	40	32	6	6	22
250	16	7	49	6	49	31	16	164	40	32	6.5	6.5	22

Options
Special dial marking
Special range
Special connections
Throttle screw
Red setting pointer
Acrylic window
Laminated window
Calibration 1.0%

All specifications are subject to change without notice
 FOR PANEL CUT - OUT SIZE, ADD 1mm TO D1.

Data Sheet no.
 NGT 603CAP

CENTRE BACK ENTRY MOUNTINGS 63, 100, 160mm.



GENERAL DIMENSIONS (MM)

	D	D1	D2	D3	D4	D5	D6	L1	L2	L3	L4	L5	L6
63	62	64	86	75	67	86	75	40	36	38	3	39	37
100	99	101	132	118	107	132	118	52	52	50	5.5	56	49
160	159	161	192	178	167	192	178	52	52	50	5.5	56	49
250	250	253	289	276	265	289	276	55	55	50	3.0	58	51

	L7	L8	L9	L10	L11	L12	F1	F2	F3	F4	S1	S2	SW
63	13	4	30	5	35	25	10	57	28	----	3.6	3.6	14
100	16	4	47	6	47	30	15	90	40	32	5.5	5.5	22
160	16	4	47	6	47	30	15	119	40	32	6	6	22
250	16	7	49	6	49	31	16	164	40	32	6.5	6.5	22

Model

SSC/CAP...BRASS INTERNALS
ST/CAP...ST.ST INTERNALS

All specifications are subject to change without notice
FOR PANEL CUT - OUT SIZE, ADD 1mm TO D1.

Data Sheet no.
NGT 603CAP