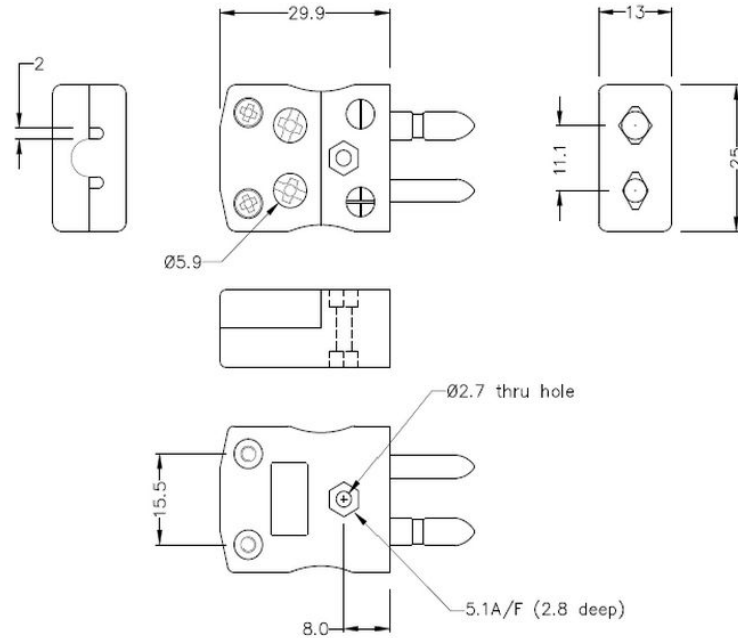
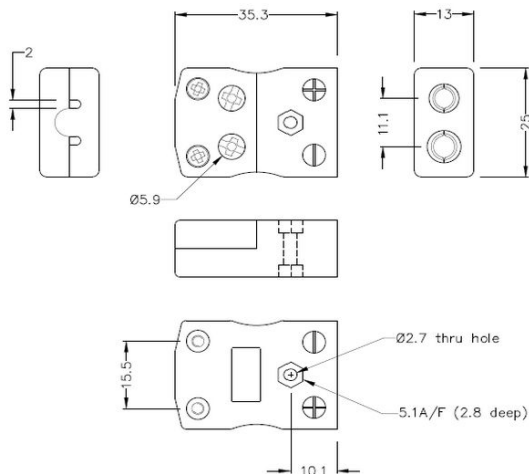


Standard Quick Wire Thermocouple Connector Quick Wire Plug - Socket JS-E-MQ-FQ Type E JIS



Standard in-line Plug - Quick Wire
(dimensions in mm)



Standard in-line Socket - Quick Wire
(dimensions in mm)



Labfacility are the UK's leading manufacturer of Temperature Sensors, Thermocouple Connectors and associated Temperature Instrumentation and stockings of Thermocouple Cables. The Company has been trading since 1971 and is ISO9001 accredited.

Plug standard de fil rapide de connecteur de thermocouple - Socket JS-E-MQ-FQ Type E JIS

Connecteur de fil rapide standard avec des broches rondes solides. Connexion jab-in facile pour la résiliation rapide.
Il suffit de pousser le fil et serrer la vis.

Spécifications**Specifications**

Product Code	XE-1086-001
General Description	Easy 'jab-in' connection for rapid termination, contacts are polarised to prevent incorrect connection
Thermocouple Type	E JIS
Connector Size	Standard
Connector Type	Quick Wire Plug & Socket
Colour	Violet
Max. Temperature	220°C
Pins	Solid Round Pins
+Positive Contact	Nickel Chromium
-Negative Contact	Copper Nickel
Standards Met	BS EN 50212:1997. RoHS