

Labfacility manufactures a wide range of components and fittings for sensor installation, in stock for immediate despatch. These include pot seals for mineral insulated thermocouples, bayonet caps, adaptors and many other fittings for all installations.



Compression Fittings

Compression fittings are used directly on probes to achieve the required insertion length in the process and to ensure the proper seating of probes into thermowells. Available in Brass or Stainless Steel.



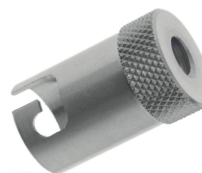
Terminal Heads

Many alternative types of terminal heads are available to meet the requirements of various applications. Variations exist in size, material, accommodation, resistance to media, resistance to fire or even explosion and in other parameters.



Terminal Blocks

Thermocouple and platinum resistance thermometer connection blocks. Terminal blocks come in many different types and sizes to suit your terminal head.



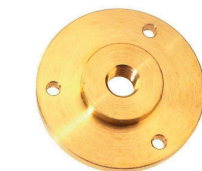
Bayonet Caps

Bayonet caps provide a method of quick fitting into suitable adapters located in the process; this technique is widely used in the plastics industry.



Thermopockets

Thermopockets are tubular fittings used to protect temperature sensors installed in industrial processes. A thermopocket consists of a tube closed at one end and mounted in the process stream. Fabricated or solid drilled, Available in stainless Steel in various sizes.



Flanges

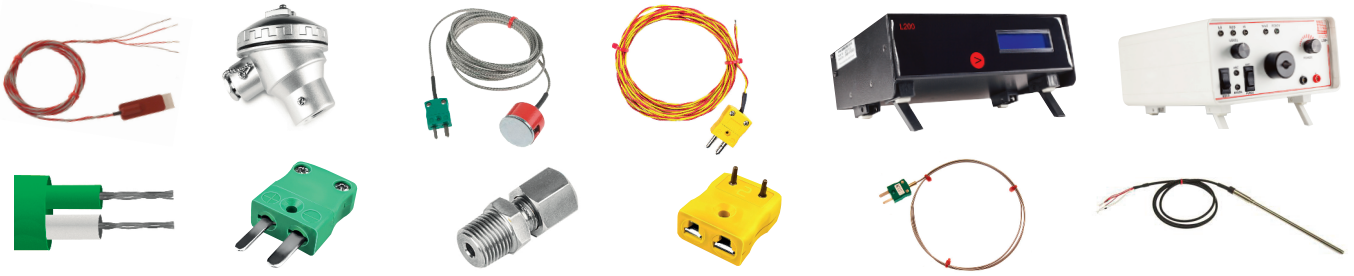
Flanges can be used to secure the sensor assembly into the process. Stainless steel and brass available.



Pot Seals

Available in two types: Plain bodied potting seals to house the transition joints of sensor to extension leads. Threaded potting seals to house the transition joints of sensor to extension leads.





Temperature Sensors

We manufacture temperature sensors to suit your application. In addition, a large range of Thermocouples in IEC or ANSI calibration, PRT's, Detectors, Environmental Sensors and Hand-Held Sensors are available from stock for immediate despatch.

- Thermocouples in IEC & ANSI
- High Temperature Sensors
- Handheld Temperature Sensors
- RTD / PRT Sensors & Detectors
- Custom Built Sensor Configurators

Thermocouple Connectors

We are Europe's largest manufacturer of thermocouple connectors and accessories in IEC, ANSI and JIS colour codes.

- Comprehensive range of fittings and accessories including mounting panels

Thermocouple & PRT Cables

Labfacility offer a wide range of thermocouple, PRT and extension cable in stock for immediate despatch. Thermocouple cables are available in IEC or ANSI colour codes. Insulation types include PFA, PTFE, PVC & Fibreglass.

- PVC, PFA, PTFE, Glassfibre & PRT cable

Temperature Instrumentation

Labfacility has always been associated with high accuracy temperature measurement manufacture.

- L60 Thermocouple & Fine Wire Welder
- Bench Top Instrumentation
- Panel Mount Instrumentation
- Cold Chain Data Loggers
- Hand Held Instrumentation
- Thermometer Kits with Meter
- Calibrators and Precision Calibration Checkers
- Temperature & Humidity Transmitters

Sensor Fittings

Labfacility manufactures a wide range of components and fittings for sensor installation, in stock for immediate despatch.

- Compression Fittings
- Terminal heads & blocks
- Locknuts, Pot Seals, Reducers, Bayonet Caps, Flanges and Thermopockets

